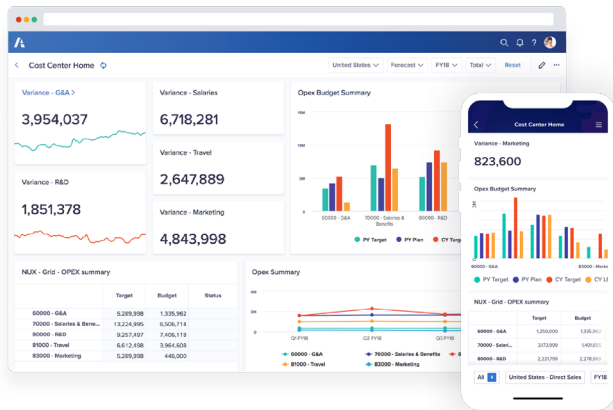




Anaplan Mobile

With Connected Planning technology, decision-making happens precisely at the moment it needs to. Expertly designed and easy to use, Anaplan Mobile gives users across the enterprise access to the information they need, anytime they need it. Highly flexible, intuitive mobile capabilities mean that collaborative decision-making—across the enterprise and on any device—always happens with the speed and scale of Connected Planning.



All planning for all people—anywhere.

With Anaplan's mobile app, you can accelerate, collaborate, and harmonize your plans while on the go. Its consistent, data-rich mobile user experience increases participation throughout the planning process, accelerates decision-making and approval cycles, and enables actionable insights at your fingertips to deliver an immediate impact.

Download the Anaplan mobile app on [iTunes](#) or [Google Play](#) for a powerful decision-making platform on-the-go.

Benefits of Anaplan Mobile

Accessible: Intuitive and self-service capabilities for maximum participation—anywhere.

- View and interact with Anaplan data anytime, anywhere.
- Intuitive, easy-to-use design with actionable insights right at your fingertips.
- From executives and decision-makers to contributors, users have a clear view of their data on-the-go.
- Innovate and deliver rich capabilities across the business more quickly.

Collaborative: Simple and efficient for more people to do more activities at any time.

- Bring people to the right place at the right time—anytime.
- Collaborate, engage, and discuss plans and data, no matter where you are.
- Flexible collaboration across teams for decisions that happen right when they need to.

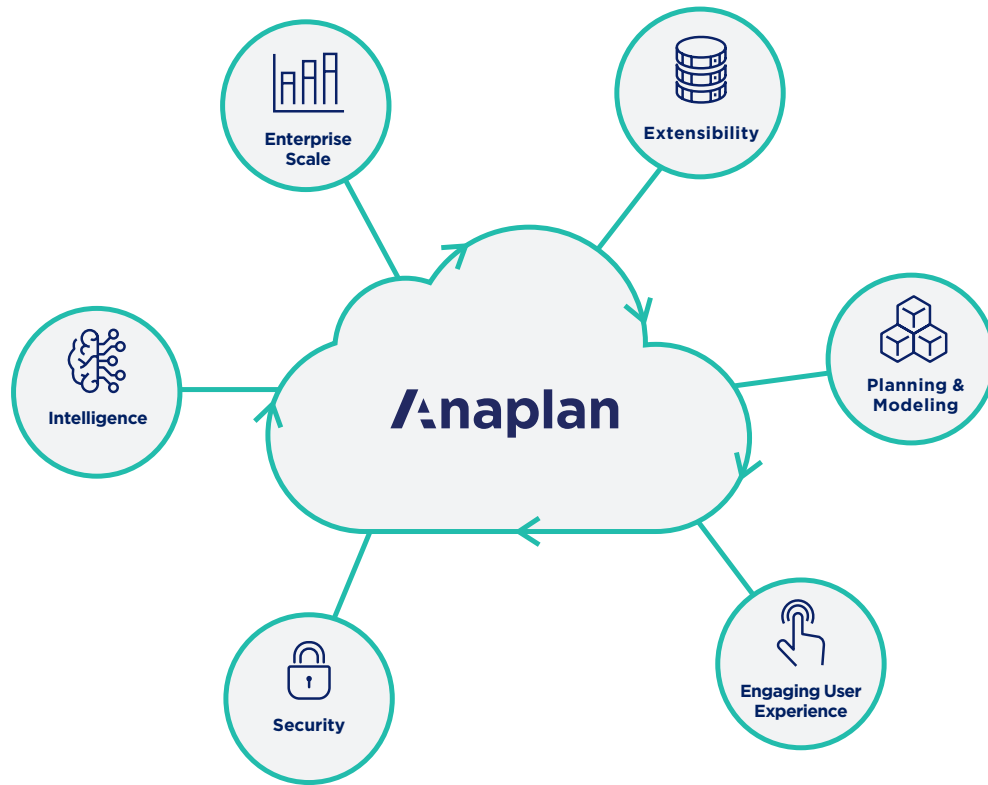
Actionable: Empower users to respond to business changes faster.

- Prioritize confidently and make timely, informed, and real-time decisions at a moment's notice.
- Increase productivity and accelerate planning and approval cycles.
- Leverage the speed and scale of an industry-leading planning platform.

Key features

- Available on iOS- and Android-powered mobile devices.
- Pages, apps, boards, and worksheets in the new Anaplan user experience render automatically on Anaplan Mobile.
- Log in to Anaplan Mobile with both enterprise single sign-on (SSO) and non-SSO options.
- View summary-level details of all categorized apps, favorites, and recently viewed pages.
- Additional Insights functionality displays cards containing data from other modules.
- View data from multiple models inside apps, pages, favorites, and recently accessed items.
- Quick Links contain helpful links to other pages within the same app. Configured in the UX, Quick Links are accessible in the mobile app.
- Seamless navigation between cards, worksheets, and boards. Scroll between cards in the same app.
- Full-screen charts with tool tips and hide/show functionality
- Image cards display company logos or product images
- View and scroll within worksheets using hide/show and landscape-mode functionalities.
- Native scrolling, customizable column and row dimensions, hide/show functionality, and more.

Anaplan Platform



Enterprise scale

The Anaplan platform connects your entire enterprise, scaling as you grow and handling real-time changes at any size. Calculations stay consistent and rapid for all data sets and any number of users.

Extensibility

The Anaplan platform collects and analyzes data in a single location, enabling both high-level and granular analyses and facilitating data-sharing with all stakeholders. APIs, ETL connectors, and built-in integrations easily communicate with other solutions.

Planning and modeling

Our in-memory Hyperblock[®] engine enables multi-dimensional scenario modeling with unlimited constraints, allowing companies to model even the most complicated business scenarios and stay ahead of changes in the market. The platform maintains 100% consistency across all model changes.

Engaging user experience

The Anaplan user experience puts the whole enterprise on a single platform. Model-building is intuitive and requires zero coding knowledge. The whole company shares real-time data across devices and solutions, enabling rapid decision-making and unprecedented flexibility.

Security

Robust protection keeps your business's data safe. Best-in-class security and compliance include BYOK, role-based access control, user management, SSO support with SAML 2.0 compliance, and data encryption at rest.

Intelligence

Embedded optimization including Optimizer[™], over thirty predictive algorithms, and evolving AI capabilities transform complicated inputs into actionable recommendations. Machine learning intelligence speeds up decision-making across use cases.

About Anaplan

Anaplan (NYSE: PLAN) is pioneering the category of Connected Planning. Our platform, powered by our proprietary Hyperblock[™] technology, purpose-built for Connected Planning, enables dynamic, collaborative, and intelligent planning. Large global enterprises use our solution to connect people, data, and plans to enable real-time planning and decision-making in rapidly changing business environments to give our customers a competitive advantage. Based in San Francisco, we have over 20 offices globally, 175 partners, and more than 1,150+ customers worldwide. To learn more, visit anaplan.com.